



Scott M. Ellis Newsletter

www.greenville.k12.ny.us

Cafeteria prices: Breakfast—\$1.50 Lunch —\$2.50 Milk—\$.50

Elementary arrival time: 7:55-8:05 am

Dismissal time: 2:25 pm

Welcome to the 2011-2012 School Year!

Welcome back! We offer a special welcome to all of our new Kindergarten students and those who are attending Scott M. Ellis Elementary School for the first time! Everyone at Ellis is looking forward to an exciting year of learning together.

The Scott M. Ellis Newsletter will be available monthly. The newsletter will be emailed to all families who have signed-up for e-news updates via the district website. Paper copies are available by request through your child's classroom teacher. The newsletter will keep you informed about events, procedures, and educational issues as they relate to your child.

If you would like to receive future newsletters via e-mail please log on to the district web page and follow the directions provided. The webpage is located at :

www.greenville.k12.ny.us

As a school, we will do our best to keep you informed about school activities and your child's progress. Please feel welcome to contact us with any questions or concerns.

Responsive Classroom

As a school community, our goal is to create an exciting and fun environment where students can achieve at their greatest potential. Our faculty members have selected the Responsive Classroom to support us in achieving this goal, and we are working to see that the Responsive Classroom strategies become integrated into our school culture. The Responsive Classroom approach is not a scripted character education program, but a set of guiding principles and educational strategies that can be incorporated into classroom practice. It emphasizes social, emotional, and academic growth in a strong and safe school community.

The following information about the Responsive Classroom is taken directly from www.responsiveclassroom.org

The goal is to enable optimal student learning. Created by classroom teachers and backed by evidence from independent research, the Responsive Classroom approach is based on the premise that children learn best when they have both academic and social-emotional skills. The approach therefore consists of classroom and school wide practices for deliberately helping children build academic and social-emotional competencies.

(continued)

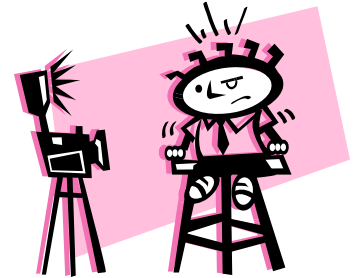
Responsive Classroom Guiding Principles

Seven principles, informed by the work of educational theorists and the experiences of exemplary classroom teachers, guide the Responsive Classroom approach:

- ✦ The social curriculum is as important as the academic curriculum.
- ✦ How children learn is as important as what they learn: Process and content go hand in hand.
- ✦ The greatest cognitive growth occurs through social interaction.
- ✦ To be successful academically and socially, children need a set of social skills: cooperation, assertion, responsibility, empathy, and self-control.
- ✦ Knowing the children we teach-individually, culturally, and developmentally-is as important as knowing the content we teach.
- ✦ Knowing the families of the children we teach and working with them as partners is essential to children's education.

Picture Day

Your child's school picture will be taken on Wednesday, October 5th. You will be receiving an informational brochure and an envelope in which to send payment for pictures if you choose to participate.



Helping Your Child Off to a Good Start

You can help your child by showing your enthusiasm for learning. Take the time to look at their work and ask them about their day. Be genuinely interested in what's going on in their lives at school. The time spent in doing these things will be repaid over and over in your child's motivation.

Please be active in your child's school experience. Our family handbook is a great source of information. If you have any questions or concerns, please call your child's teacher. The school staff is always ready to listen to your problems, concerns, suggestions, and compliments. Communication is a powerful tool in ensuring your child's success.

Welcome to New Staff!

Welcome to Stephanie Ackerman and Faith Smith, our newest Speech Language Pathologists. We will look forward to welcoming additional staff members after the September Board of Education meeting.

Board of Education

Mr. Wilton Bear, President
Mrs. Anne Mitchell, Vice President
Ms Anne Holstein Mr. Jason Reinhard
Mr. Gregory Lampman Mr. Lawrence Tompkins
Mrs. Roseanne Stapleton

The Board of Education has open meetings at the M.S./H.S. Library. The members welcome and encourage your attendance. Attending Board meetings is an excellent way to find out about the goals that are being pursued for your child. BOE meetings are preceded by an open forum for questions or comments from parents, teachers and community members in attendance. Regular meetings conclude with another fifteen minute open forum for more audience questions or comments about the Board actions that just transpired. The next Board of Education Meeting is September 12th.

Contact People

District Superintendent, Cheryl Dudley - 966-5070 ext. 501
Elementary Principal, Peter Mahan - 966-5070 ext. 301
Elementary Guidance Counselor, Erin DuBois -966-5070 ext. 313
Elementary School Nurse, Ellen Warga-966-5070 ext. 320
Supervisor of Transportation, Karen Schrader -966-5070 ext. 463
Food Service Supervisor, Paul Ventura—966-5070 ext.429
Director of Pupil Personnel Services, Linda Wistar—966-5070 ext. 321
Assistant Director of Pupil Personnel Services, Rebecca Martin—966-5070 ext.323
High School Principal, Michael Laster -966-5070 ext. 401
Middle School Principal, Brian Reeve — 966-5070 ext. 451

PTA News

The elementary PTA fundraiser kick-off will be held on September 15th. Look for the information your child will bring home that Tuesday. Participation is not required, but the fundraising efforts of families during this single fundraiser provides benefits to students that last throughout the year. Activities funded by our PTA include: Back to School Night, Family Dance, PARP Ice Cream Social and After School Enrichment.

Please remember that **NO CHILD** is to go door-to-door as part of any fundraising activity. Families should sell only to friends and relatives.

The PTA Back to School Family Fun Night will be held on Friday, September 16th. PTA calendars with complete details will be sent home with your child.

Computer Network Use

Please be advised that if your child does not already have one on file, he or she will be bringing home a parent/student computer agreement use form which needs to be signed and returned to your child's teacher. This permits your child to use the internet on the computers at school. Please know that elementary students use computers only in supervised areas.

Attendance

All students are expected to attend school daily. As an elementary school we understand that illness occurs, but please remember that consistent school attendance is important. Scattered absences, early departures, and family vacations while school is in session interrupt learning. If your child is ill and must be out of school, please remember to send a note upon your child's return to school.

As a school district, we will keep families updated about the number of days each student is absent and tardy. Families will be given updates on report cards, and will receive a letter if a child is absent or tardy eight, sixteen, or more days. If there is something we can do to help with attendance issues, please contact our school.

School Day

- Buses and students arrive: 7:55 a.m. and the instructional day begins
- Students entering the building after 8:10 are considered tardy; please accompany students to the main lobby
- Dismissal: 2:25 p.m.
- Buses depart from Ellis: 2:35 p.m. to pickup MS/HS students

Arrival: We ask all parents who drop their children off at school in the morning to *not* drop students off before 7:55 . Teachers are planning and getting ready for the day, and are not available to supervise students.

Procedure for Dismissal Pick up: Students who need to be picked up at dismissal will report to the Multi-Purpose Room at 2:25. Parents will enter the MP Room through the north doors that face the field. The doors will be opened at 2:20 once the last PE class of the day is finished. It will not be necessary for parents to come in the main entrance. Students must be signed out when picked up in the MP room. Our staff members will be there to monitor and assist with our dismissal process. This helps ease congestion in the main hallway and ensure student safety. Anyone picking up children may be asked to show identification.

Dismissal Procedure/Bus Notes

Children who need to get off the bus at a different stop, ride a different bus home for child care needs are to bring in an note signed by a parent. A permanent note may be written for long term changes. A verbal request by a child will not be honored. Due to limited seating on our buses, notes for play dates cannot be honored.

Written notes are also required if a child is to be picked up at school by a parent or someone other than a parent. Photo ID will be required before releasing the student. All children are to be picked up at the main office. Please do not ask your youngster to meet you in the parking lot. All children being picked up before 2:10 must be signed out at the main office. All children being picked up at dismissal must be picked up at the multi purpose room. **Sample bus note forms are attached. Please be sure all information required is complete. It is very important that the bus route number is included.**



Bus Drivers are Needed

Substitute bus drivers are needed. Training is provided. Please contact the Transportation Office at 966-5070 ext. 463 for more information.

Physical Education

Please remember that students will need socks and sneakers for PE classes. Shirts should have sleeves so shoulders are covered. Skirts or dresses are not appropriate for PE activities. For obvious reasons flip-flops, clogs, and platform soled sneakers are dangerous and should not be worn for gym. **For all student's safety, no jewelry (including earrings) should be worn during gym class.** Any students wearing jewelry that impedes safety will be asked to remove the items during PE. Students are responsible for the care of their items. Thank you for your planning and cooperation.

Elementary Dress Code

The Greenville Central School District code of conduct contains a dress code applicable to all students in grades K-12. Generally, students are expected to dress in a manner that is safe, appropriate and not disruptive. Clothing that is revealing, vulgar, promotes drug, tobacco or alcohol use, is provocative or disrupts the educational process in any manner is prohibited. Please refer to the dress code in the code of conduct (sent to each family in August) or the district website for more information.

When Students Are Ill....

The school nurse keeps records of student illnesses. If your child is going to be absent from school due to illness, please call the elementary school office (ext. 301) or nurse's office (ext.764). Thank you for your cooperation.

Why Do I Need to Wash My Hands? (From Kidshealth.org)

"Did you wash your hands?" How many times did you hear that today? Probably a lot. But why are adults so hung up on hand washing? Why are they so in love with lather?

Washing your hands is the best way to stop germs from spreading. Think about all of the things that you touched today—from the telephone to the toilet. Maybe you blew your nose in a tissue and then went outside to dig around the dirt. Whatever you did today, you came into contact with germs. It's easy for a germ on your hand to end up in your mouth. Think about how many foods you eat with your hands.

You can't wear rubber gloves all day long, but you can wash your hands so those germs don't get a chance to make you or someone else sick. When germs go down the drain, they can't make anyone sick.

So when are the best times to wash your hands?

- * Before eating or touching food (like if you're helping cook or bake, for example)
- * After using the bathroom
- * After blowing your nose or coughing
- * After touching pets or other animals
- * After playing outside
- * Before and after visiting a sick relative or friend

Now you have the when and the why of hand washing. But did you know that a lot of people don't know how to get their paws perfectly clean? The next time you're told to step up to the sink and scrub up, remember these handy hints:

1. Use warm water (not cold or hot) when you wash your hands.
2. Use whatever soap you like. Some soaps come in cool shapes and colors or smell nice, but whatever kind that gets you scrubbing is the kind you should use. Antibacterial soaps are OK to use, but regular soap works fine.
3. Work up some lather on both sides of your hands, your wrist, and between your fingers. Don't forget to wash around your nails. Wash for about 10 to 15 seconds about how long it takes to sing "Happy Birthday." (Sing it quickly two times or just once if you go nice and slow.)
4. Rinse and dry well with a clean towel.

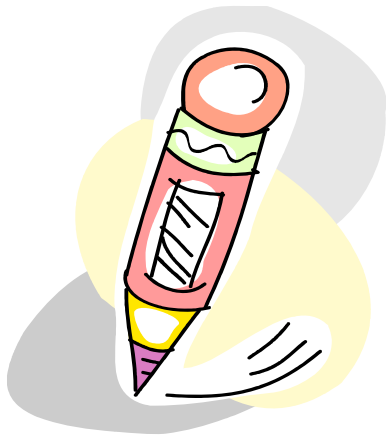
Toys, Electronic Games and Devices

Play is an important part of learning. At Scott M. Ellis Elementary School we have many wonderful learning tools for children to use as part of their school day. Therefore, students should not bring toys from home, unless specifically requested by the classroom teacher.

As specified in the Greenville Central School District Code of Conduct, students are not permitted to possess or use personal electronic devices such as radios, headphones, cell phones, or other disruptive equipment and devices in prohibited areas.

Students will be supplied with the electronic learning tools necessary for academic activities; therefore, personal electronic devices are prohibited throughout Scott M. Ellis Elementary School, unless specific permission is given by the classroom teacher.

Parent Sign-in Procedures



Please remember to sign-in each time you enter our building, whether you are volunteering in a classroom, joining your child for lunch, or here for a meeting.

In our efforts to maximize all students' learning time, teachers will inform the office of parents who are expected as classroom volunteers. When these volunteers arrive, they may sign-in and go to their child's classrooms. If parents would like to go to a different classroom even if only to ask a "quick question," we ask that they return to the office first so that staff can check the teacher's availability.

If parents are coming in for an unscheduled visit, our greeter at the front desk will call the classroom to see if the teacher is available. If the teacher is not available, office staff will assist parents in setting up an appointment.

When parents are dropping off forgotten lunches, instruments or other items, please bring them to the office. We will call for the child to come pick the item up during a break in instruction. We appreciate everyone's help as we try to limit interruptions.

Our top priority is always to keep your children safe. While some of our precautions may cause a few inconveniences, those inconveniences are far outweighed by the greater good of the security of our students.

Dining at the Scott M. Ellis Cafeteria

School lunches and breakfasts are available on a daily basis. Lunches (including milk) cost \$2.50 for students. Ala carte milk can be purchased for \$.50. Treats and a number of other ala carte items can be purchased also. Breakfast costs \$1.50. All families were sent home information regarding our free and reduced lunch program. If you are interested in applying, **please return your forms to the school office as soon as possible.**

Students may prepay for lunch or breakfast to avoid having to carry lunch money every day. It is recommended that families pre-purchase at least one lunch, for that one day when your child may forget their lunch money. Pre-payment may be for as many days in advance as you wish. Monies go into an individual Nutrikid account which is monitored by the cashier at the register. Parents can track student purchases and available funds via the Nutrikids account on the internet. If you have any questions regarding our pre-paid program, please contact Mr. Ventura at ext. 429.

As a help to our families, students who have forgotten their lunch money often borrow money from Mr. Mahan in the elementary office. **When borrowed money is returned please send it to the elementary office in a sealed envelope with your child's name clearly marked on it.** Please try to double-check your children's lunch money before they leave for school.

If your child brings a lunch from home please label the lunch box or bag with a first and last name. Often lunches are left on buses or in other places without proper identification. As a way to attend to the safety needs of all students, microwave ovens are not available in the elementary cafeteria. Microwave cooking times vary for each food and microwave, and it is difficult for staff to anticipate if an item is cooked just right or over-heated. In addition, waiting for food to be warmed reduces time for students to eat.

If you would like to have your child eat a hot lunch, please plan on purchasing a school lunch or prepare items at home and place it in an insulated container .

Lunch/Recess

Students have a 45-minute lunch/recess time with a minimum of 20 minutes in the cafeteria and the rest as recreational time. As a rule students go outdoors for fresh air and exercise every recess during the school year unless severe weather conditions prevent them from doing so. Please see that they are dressed appropriately. Children returning from illness are also expected to go outdoors unless your physician recommends otherwise. Fresh, clean air is often the best thing for speeding up a recovery from illness.

Bus Safety Drill

The first required bus safety drill will take place on September 16th after students have boarded buses. Please be aware that this will mean a 10-15 minute delay in the time your child will arrive home on this day.

Access for People with Mobility Needs

People with mobility needs should enter the building through the north end of the main hallway. This doorway is next to our blue zone parking and is accessible via a covered ramp. Anyone who needs to utilize this entrance due to limited mobility can enter the code 1096* on the keypad next to the door. When the code is entered, an intercom will be activated and a member of our staff will come to welcome you to our building. Once inside, guests may use the elevator to reach classrooms on the second story.

Lunch Schedule

Support Staff supervise students in the cafeteria and on the playground. Students eat first and then go out to recess. Lunch/recess times are as follows:

- 11:00-11:45 Ms Dupuis, Mrs. Herwick, Mrs. Kappel, Mrs. Overbaugh, Ms Vincent
- 11:25-12:10 Mrs. Brady, Mrs. Davitt, Mrs. Hawkins, Mrs. Rosenberg, Mrs. Somers
- 11:45-12:30 Ms Abram, Mrs. Brandon, Mrs. Rufa, Mrs. Spencer, Mrs. Travis
- 12:10-12:55 Ms Chowdhry, Mrs. McElwey, Mr. Kiefer, Ms Rowlee, Mrs. Neuffer, Ms Gruhle
Mrs. Mulholland, Mrs. Robertson
- 12:30-1:15 Ms Asam, Mrs. Misuraca, Mr. McElwey,
- 1:00-1:45 Mr. Haller, Mr. Hostash, Mrs. Persico

Upcoming Events

- September 12 First Day of School for grades 1-12
Kindergarten Open House-12:15-1:45
- September 12 Board of Education meeting at the High School Library, 7:00 p.m.
- September 15 Grade 5 Open House 6:00 p.m.
- September 15 Grade 3/4 Open House 6:00 p.m.
- September 16 PTA Family Fun Night on Ellis Playground, 5:00 p.m.
- September 19 Board of Education Tour of Facilities, 6:00 p.m.
- September 21 Grade 1/2 Open House 6:00 p.m.

- October 5 Fall Picture Day

Our School at a Glance

Office:

Elementary Principal—Peter Mahan
Secretary—Deborah Sanchez
Secretary—Karen Overbaugh

Kindergarten:

Lorie Dupuis—Room 125
Valerie Kappel—Room 128
Denise Herwick—Room 123
Maryanne Overbaugh—Room 131
Lisa Vincent—Room 132

First Grade:

Sheila Brady—Room 115
Debbie Davitt—Room 101
Vikki Hawkins—Room 222
Karen Rosenberg—Room 224
Susan Somers—Room 221

Second Grade:

Barbara Brandon—Room 229
Josephine Rufa—Room 231
Mary Lou Spencer—Room 1B
Martha Travis—Room 1A

Third Grade:

Bill Kiefer—Room 202
Wendy McElwey—Room 215
Rochelle Rowlee—Room 217

Fourth Grade:

Pam Asam—Room 102
James McElwey—Room 201
Audra Misuraca—Room 105

3/4 Multiage:

Kate Gruhle—Room 208
Denise Mulholland—Room 209

Fifth Grade:

Brian Haller—Room 117
Brian Hostash—Room 219
Bonnie Persico—Room 116

Physical Education:

Justin Bruce—Large Gym/MP Room
Gordon Conrow—Large Gym/MP Room
Eileen Kiefer—Large Gym/MP Room

Art:

Judy Spring—Room 120

General Music:

Alicia Lewis—Room 220
Janine Rochler—Room 207

Instrumental Music:

Christine Wegrzyn—Room 220A

Computer Teacher:

Pamela Hollinde—Library

Librarian:

Nancy Lockwood—Library

Reading/Academic Intervention:

Deirdre Dalton—Room 214
Kathleen Gray—Room 2A
Lisa Levine—Room 103
Kate Lynch-Williams—Room 216

Special Education Teachers:

Susan Abram—Room 97
Christine Carey—Room 230
Amy Latham—Room 106
Jan Lucente—Room 214
Fahmida Chowdhry—Room 98
Kathy Neuffer—Room 114
Maureen Pulice—Room 106
Margaret Robertson—Room 90

Speech Therapists:

Stephanie Ackerman—Room 205
Faith Smith—Room 205

Health Office:

Ellen Warga, R.N.— School Nurse
Sally Collins, L.P.N.

Challenge:

Susan Konas—Room 99

Guidance Counselor:

Erin DuBois—Guidance Office

School Psychologists:

Dr. Audrey Douglas—Room 122
Rachael Shatsoff—Room 96

Pupil Personnel Services:

Linda Wistar—Director
Rebecca Martin—Assistant Director
Tina Warnstadt—Secretary

Central Registrar:

Lynette Terrell-PPS Office-H. S.

Director of Human Resources:

Donna Accuosti—Room 118
Nancy Beers—Secretary—Room 119

Director of Curriculum & Communications:

Colleen Hall—

Curriculum Coordinator:

Laura Calvino—Room 2B

Greenville Central School

BUS SAFETY DRILL

New York schools are required to have 3 drills every year to practice bus evacuation.

- #1 Within the first seven days of school
- #2 Between Nov 1 and Dec 31
- #3 Between March 1 and April 30

Students will learn the proper way to evacuate a bus, how to use the emergency exits, and review the bus safety rules. The bus driver will conduct the drills with assistance from the students. All buses will be parked either at the Elementary School or the MS/HS after loading all students in the afternoon.

All students will exit out the rear emergency door, **quietly**, with direction from the driver or helper. They will sit and slide out the door with the help of an older student. Students should be quiet and stay in line while waiting to re-enter the bus

When all students have re-entered their bus and the schoolyard is clear, the buses will leave the school grounds.

The buses will be running about 10 minutes late on each of these days, so expect your child to come home later than usual. Our first bus drill will be held on Friday, September 16th, 2011.

Students who do not participate in this drill will practice bus evacuation on the morning of September 16.

